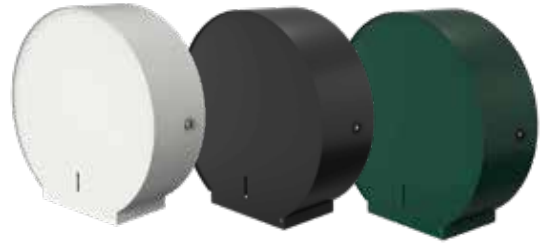


BJÖRK TOILET ROLL HOLDER, JUMBO

3350/3355/3360

Holds 1 jumbo + 1 standard size toilet roll
 Powder coated stainless steel
 2-year warranty



BJÖRK toilet roll holder Jumbo +1 has a modern, Scandinavian design that matches the latest range of DAN DRYER's bathroom equipment. The high capacity system holds 1 jumbo and 1 standard size toilet roll.

Technical data

	Metric	Imperial
Type	BJÖRK TOILET ROLL HOLDER, JUMBO Prod. No.: 3350, 3355, 3360 Toilet roll holder	BJÖRK TOILET ROLL HOLDER, JUMBO Prod. No.: 3350, 3355, 3360 Toilet roll holder
Dimensions	H: 470 mm x W: 455 mm x D: 171.5 mm	H: 18.50" x W: 17.91" x D: 6.75"
Toilet paper roll sizes	Jumbo roll: Max. Ø 300 mm Standard roll: Max. Ø 125 mm Width: Max. 107 mm	Jumbo roll: Max. Ø 11.81" Standard roll: Max. Ø 4.92" Width: Max. 4.21"
Material	Powder coated stainless steel	Powder coated stainless steel
Capacity	1 jumbo + 1 standard size toilet paper roll	2 standard size toilet paper rolls
Net weight	9,5 kg	20.94 lb
Tender text	Toilet paper roll holder in powder coated stainless steel. Capacity: 1 jumbo + 1 standard size toilet paper roll. Net weight: 9.5 kg. H: 470 mm x W: 455 mm x D: 171.5 mm	Toilet paper roll holder in powder coated stainless steel. Capacity: 1 jumbo + 1 standard size toilet paper roll. Net weight: 20.94 lb. H: 18.50" x W: 17.91" x D: 6.75"

Application

BJÖRK, a true breakthrough in commercial bathroom products. The large format toilet roll holder for 1 Maxi + 1 standard roll is ideal for high usage areas. The perfect choice for keeping up the demands of a busy washroom.

References

Offices and administration, shopping centres, restaurants, hotels, airports, schools, public institutions and cultural centres.

Standard colours

Prod. No. 3350: RAL 9003, white.
 Prod. No. 3355: RAL 9005, matt black.
 Prod. No. 3360: RAL Classic colours.

Installation

Wall mounting.

